

# HUNTERS<sup>®</sup>

HERE TO GET *you* THERE



## Lapwing Rise

Stevenage, SG2 9NH

£950 Per Calendar Month



One Bedroom 1st Floor Flat - Available late December.

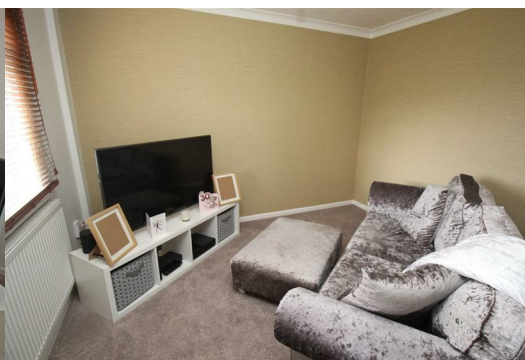
Hunters are pleased to welcome this well presented property, within walking distance to a main supermarket and offered unfurnished. The property comprises of open plan lounge & kitchen, double bedroom and good sized bathroom.

Holding Deposit equivalent to one week rent - £219.00

Deposit - £1095.00

Council Tax Band - B

EPC RATING D



[illegible]

**Energy Efficiency Rating**

Very energy efficient - lower running costs

(92 plus) A

(81-91) B

(69-80) C

(55-68) D

(39-54) E

(21-38) F

(1-20) G

Not energy efficient - higher running costs

Current: 62

Potential: 76

**England & Wales**

EU Directive 2002/91/EC

**Environmental Impact (CO<sub>2</sub>) Rating**

Very environmentally friendly - lower CO<sub>2</sub> emissions

(92 plus) A

(81-91) B

(69-80) C

(55-68) D

(39-54) E

(21-38) F

(1-20) G

Not environmentally friendly - higher CO<sub>2</sub> emissions

Current: 76

Potential: 76

**England & Wales**

EU Directive 2002/91/EC

53 High Street, Stevenage, Hertfordshire, SG1 3AQ  
Tel: 01438 313393 - Optio Email: Amairah.Razzaq@hunters.com <https://www.hunters.com>